

$$m = \frac{-24}{1}$$

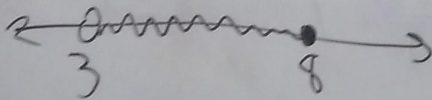
$$b = 5$$

Why?

Compound Inequalities

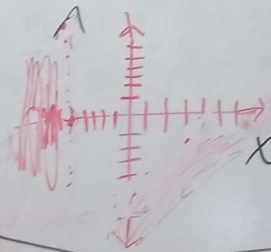
- When 2 inequalities are graphed on the same number line.
- Separated by the word "and" or "or"

$$3 < x \leq 8$$

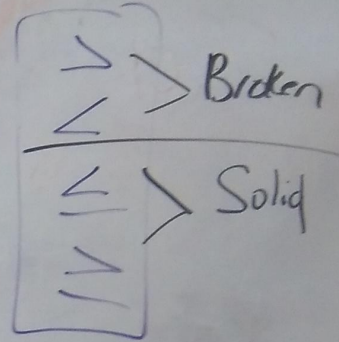


$$x < -5$$

$m =$ undefined

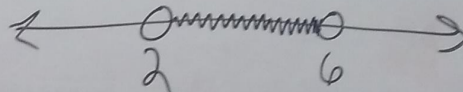


zerick
zach



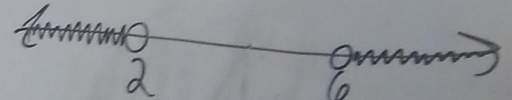
Ex:

$$x > 2 \text{ and } x < 6$$



$$2 < x < 6$$

$$x < 2 \text{ or } x > 6$$



$$x < 2 \text{ or } x > 6$$

$$y \leq \frac{1}{2}x - 4$$

